



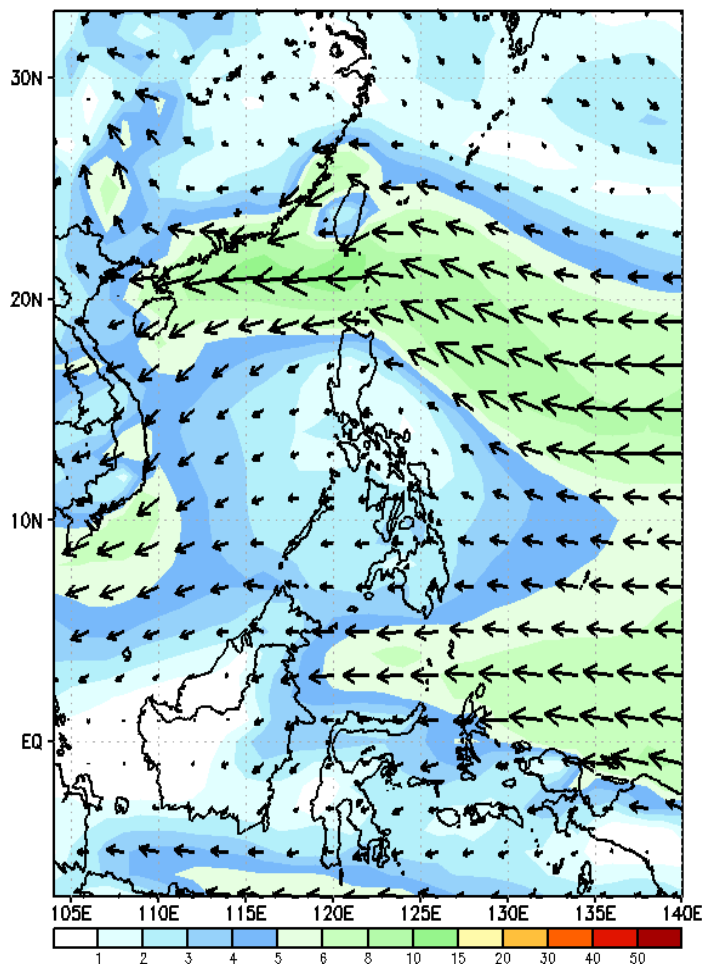
Week 1 & Week 2 Forecast for the Philippines using GEFS Model



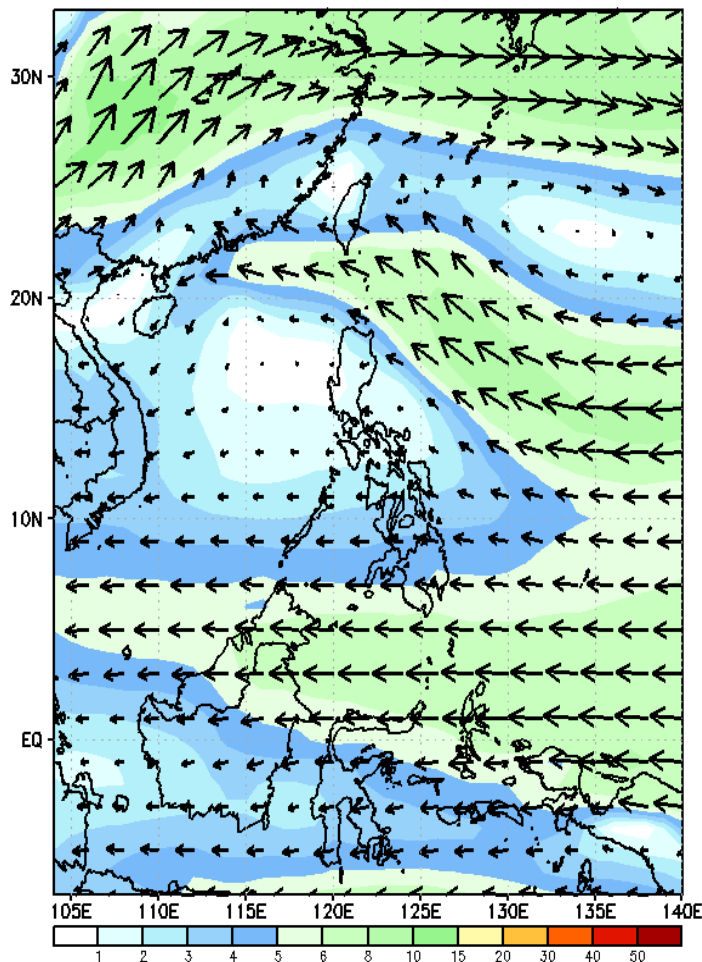
GEFS Week-1 Wind Forecasts:

Week 1: Nov 13-19, 2024

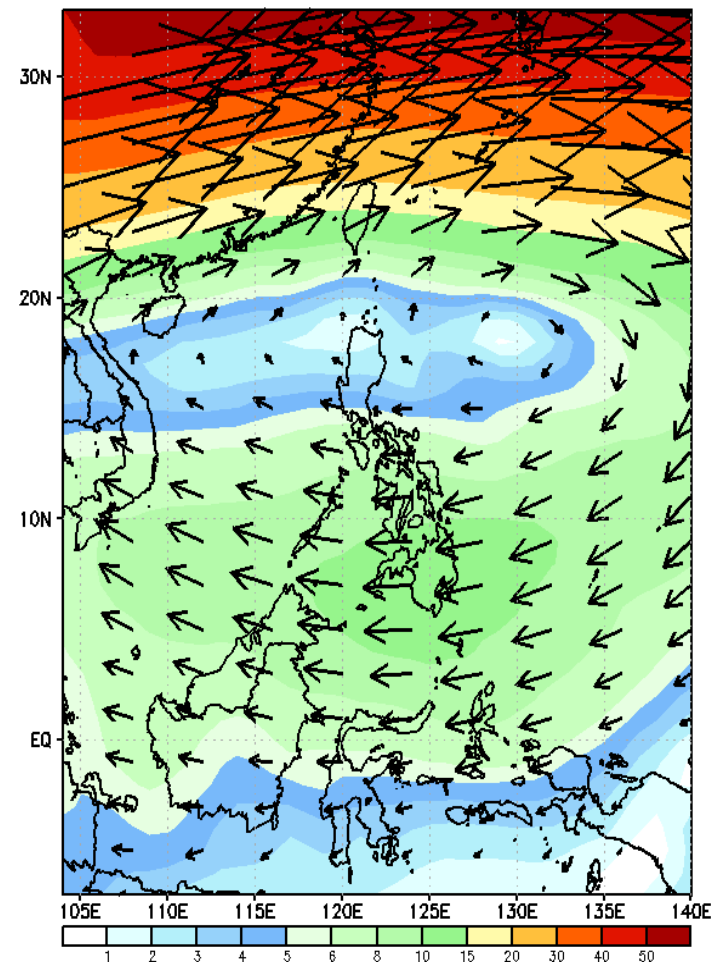
GEFS Week-1 850-hPa Wind Total
Valid: 20241113 - 20241119



GEFS Week-1 700-hPa Wind Total
Valid: 20241113 - 20241119

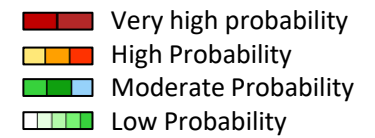


GEFS Week-1 200-hPa Wind Total
Valid: 20241113 - 20241119



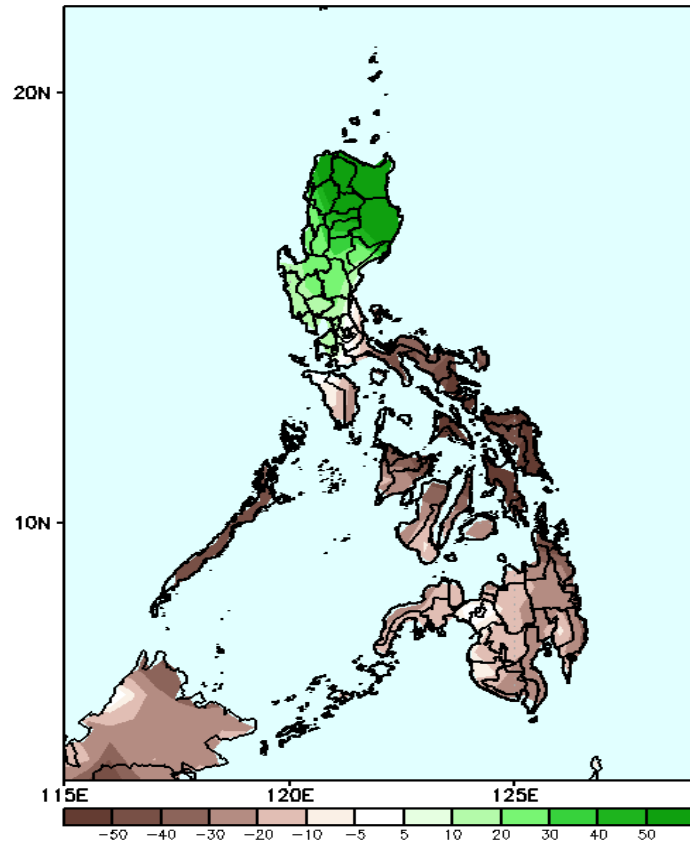
Easterlies will likely affect most parts of the country during the forecast period.

Precipitation Anomaly and Exceedance Probability > 25/50 mm

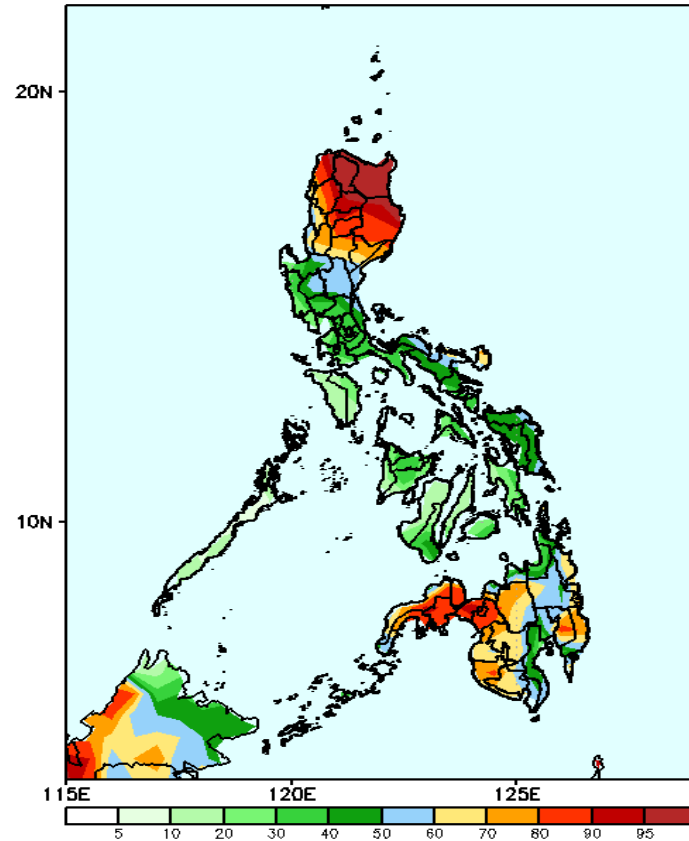


Week 1 Nov 13-19, 2024

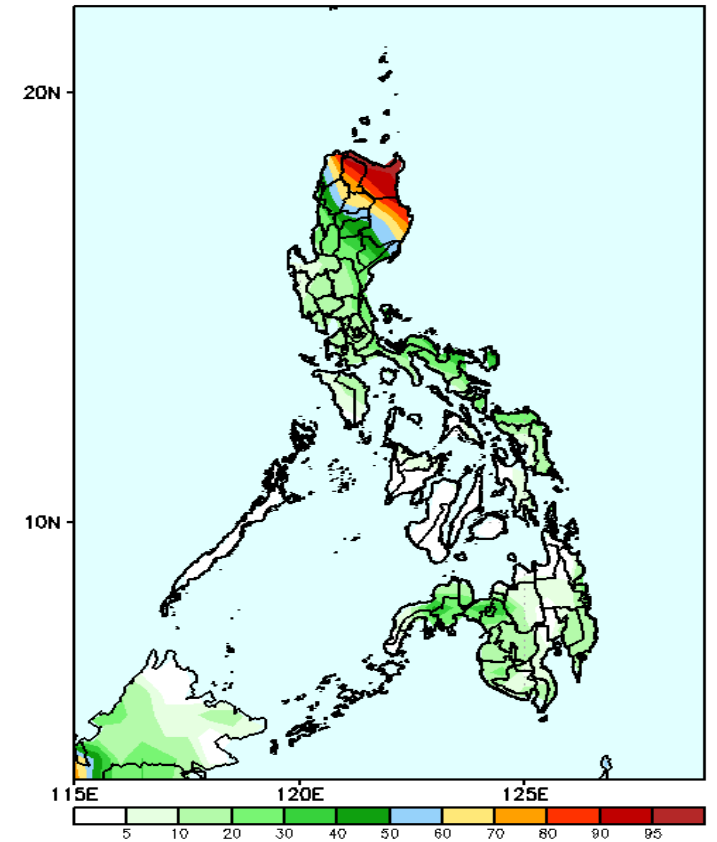
GEFS Week-1 Precip Anomaly
Valid: 20241113 - 20241119



GEFS Week-1 Exceedance Prob. > 25mm
Valid: 20241113 - 20241119



GEFS Week-1 Exceedance Prob. > 50mm
Valid: 20241113 - 20241119



Increase of rainfall of more than 50mm will be likely in most parts of northern Luzon; 10-30mm in central Luzon while rainfall deficit of 10-60mm is expected for the rest of the country.

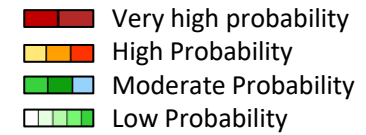
Probability to Exceed 25mm

- High to a very high over most parts of northern Luzon and western Mindanao
- Moderate to high over most parts of central and southern Luzon, NCR, Bicol Region, Eastern Visayas, Bukidnon, and the rest of Mindanao
- Low over the rest of Luzon and Visayas.

Probability to Exceed 50mm

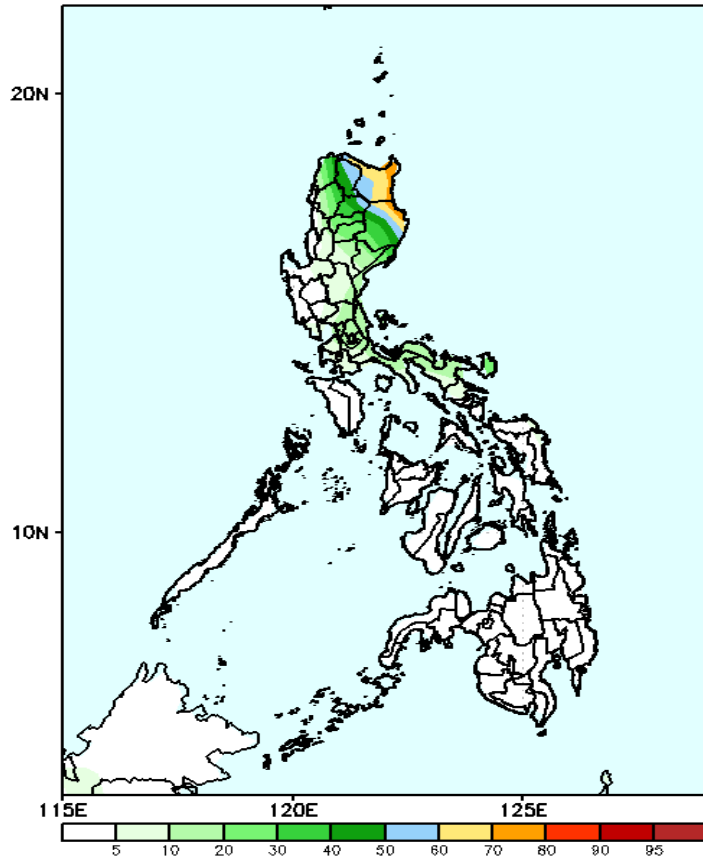
- High to a very high over Cagayan, Isabela, Batanes, Apayao;
- Moderate to high over the rest of CAR, rest of Cagayan Valley, rest of Ilocos region, Aurora, northern Quezon, and portion of Bicol Region;
- Low to moderate over the rest of the country.

Exceedance Probability > 100/150/200 mm



Week 1: Nov 13-19, 2024

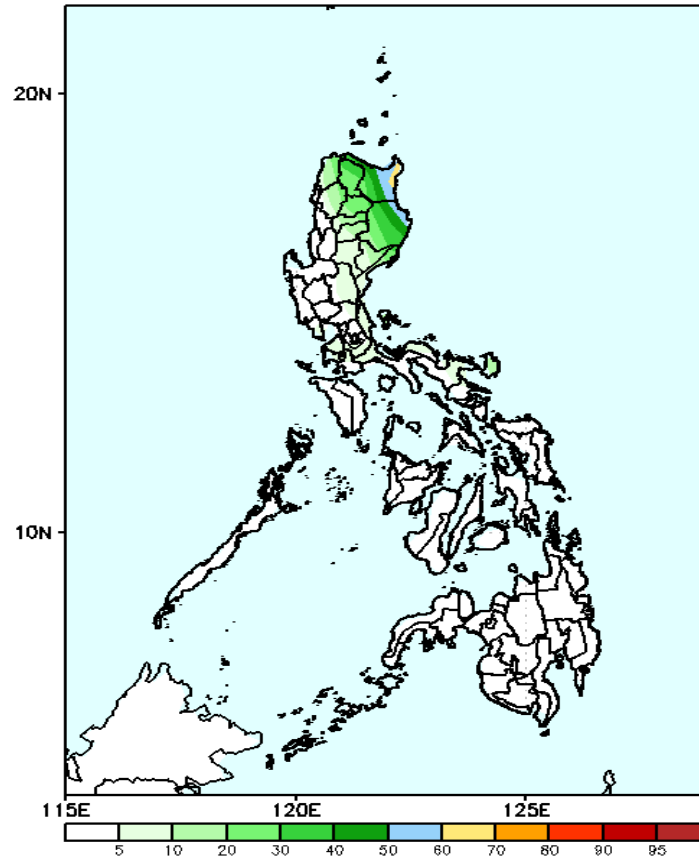
GEFS Week-1 Exceedance Prob. > 100mm
Valid: 20241113 - 20241119



Probability to Exceed 100mm

- Moderate to High over Batanes, Apayao, Isabela, and Cagayan;
- Low to moderate over Quezon, Bicol Region and Ilocos Region;
- Low over the rest of the country;

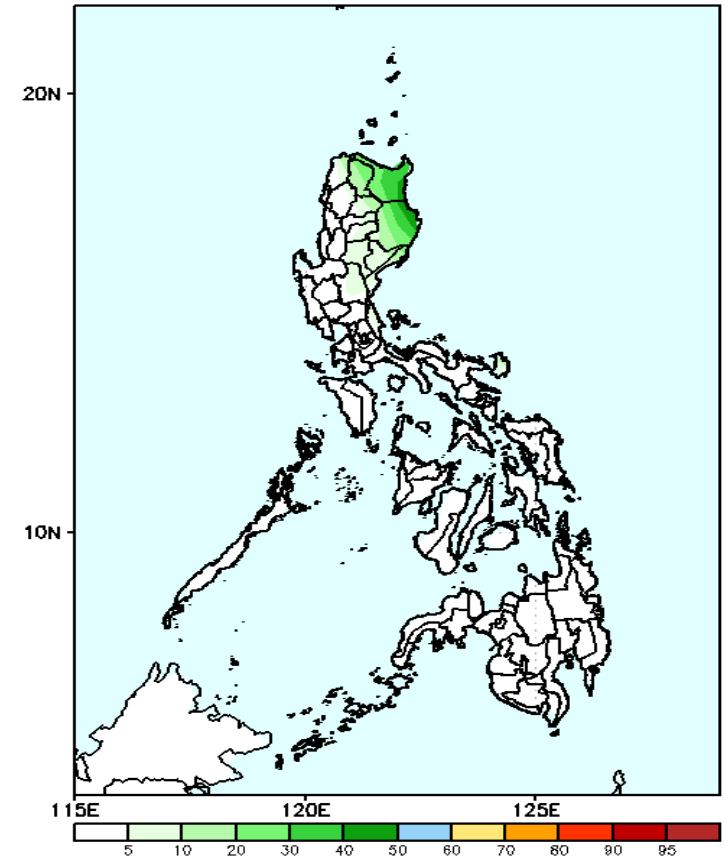
GEFS Week-1 Exceedance Prob. > 150mm
Valid: 20241113 - 20241119



Probability to Exceed 150mm

- Moderate to high over portions of Batanes, Apayao, Isabela, and Cagayan;
- Low to moderate over the rest of Northern Luzon;
- Low over the rest of the country.

GEFS Week-1 Exceedance Prob. > 200mm
Valid: 20241113 - 20241119



Probability to Exceed 200mm

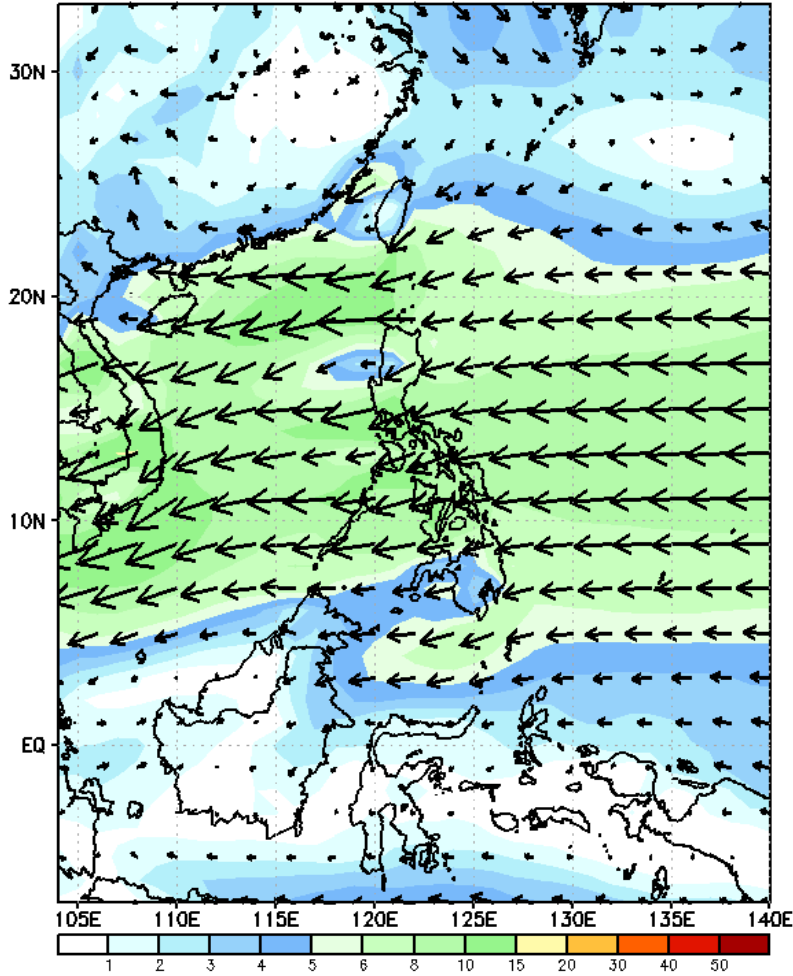
- Moderate to high over portions of Batanes, Cagayan, and Isabela;
- Low to moderate over the rest of Northern Luzon;
- Low over the rest of the country.



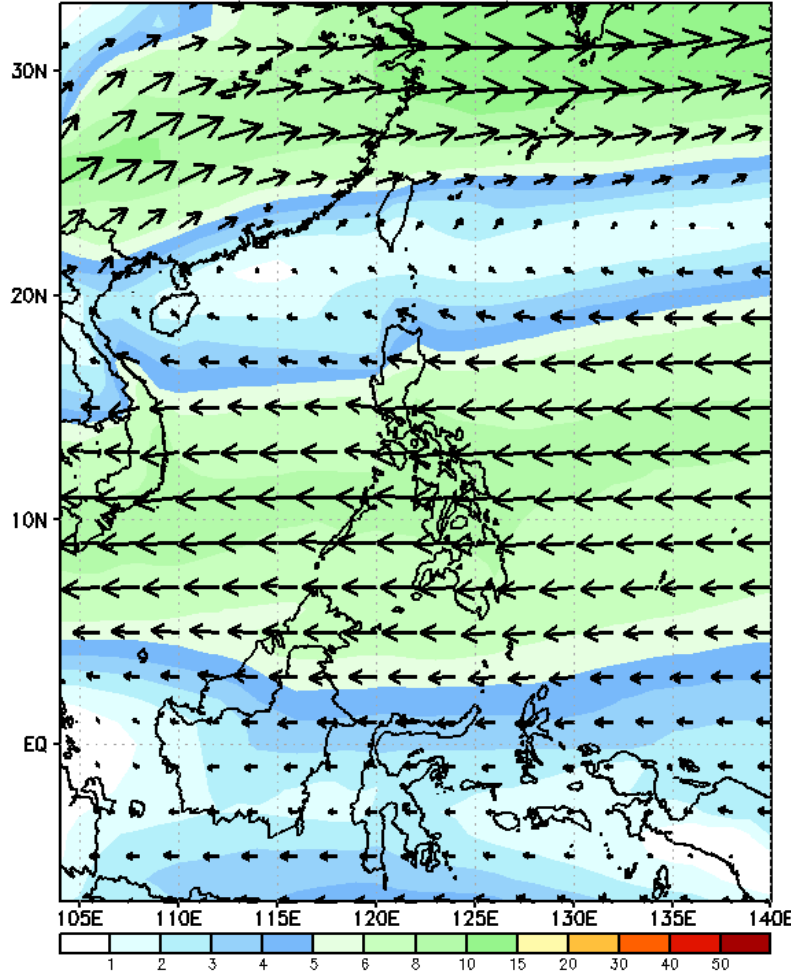
GEFS Week-2 Wind Forecasts:

Week 2: Nov 20-26, 2024

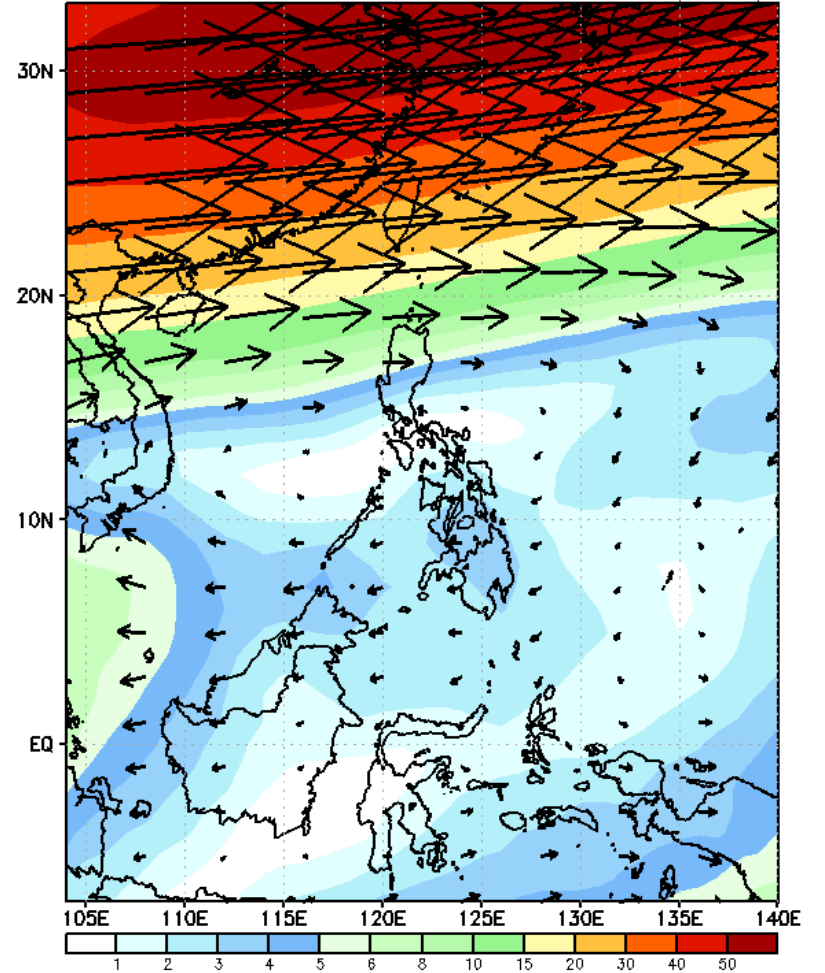
GEFS Week-2 850-hPa Wind Total
Valid: 20241120 - 20241126



GEFS Week-2 700-hPa Wind Total
Valid: 20241120 - 20241126

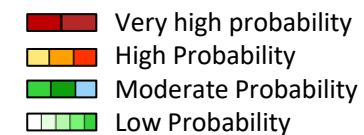


GEFS Week-2 200-hPa Wind Total
Valid: 20241120 - 20241126



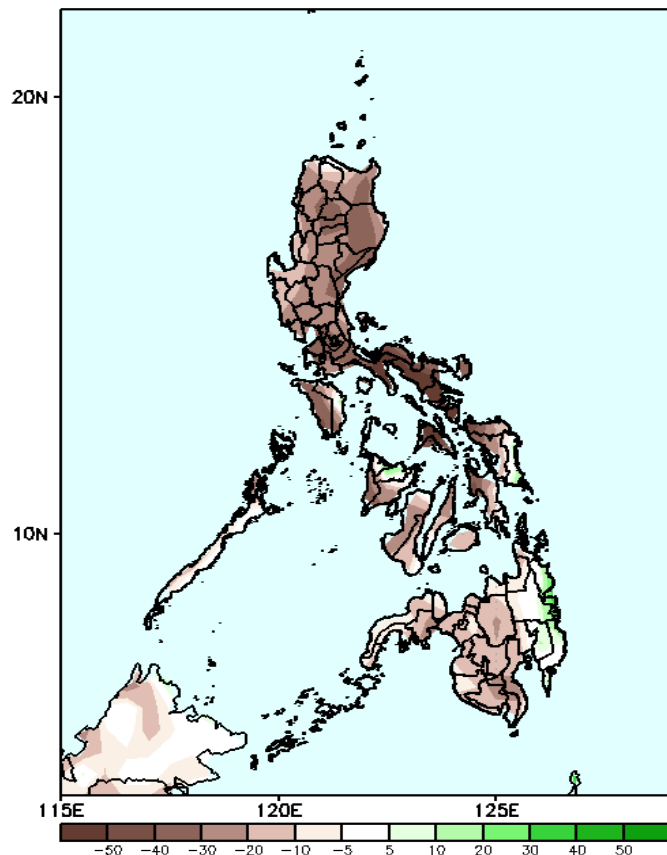
Northeast windflow will likely affect Extreme Northern Luzon, Easterlies will likely affect the rest of the country during the forecast period

Precipitation Anomaly and Exceedance Probability > 25/50 mm



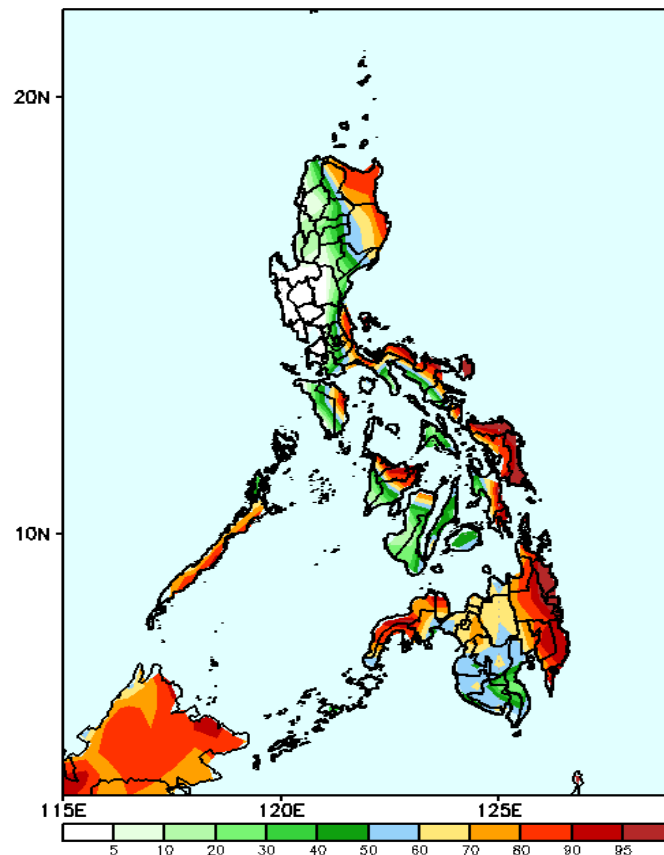
Week 2: Nov 20-26, 2024

GEFS Week-2 Precip Anomaly
Valid: 20241120 - 20241126



Rainfall deficit of 20-60mm is most likely in most parts of the country except in some areas in Capiz and eastern Mindanao where there is 10-20mm increase of rainfall.

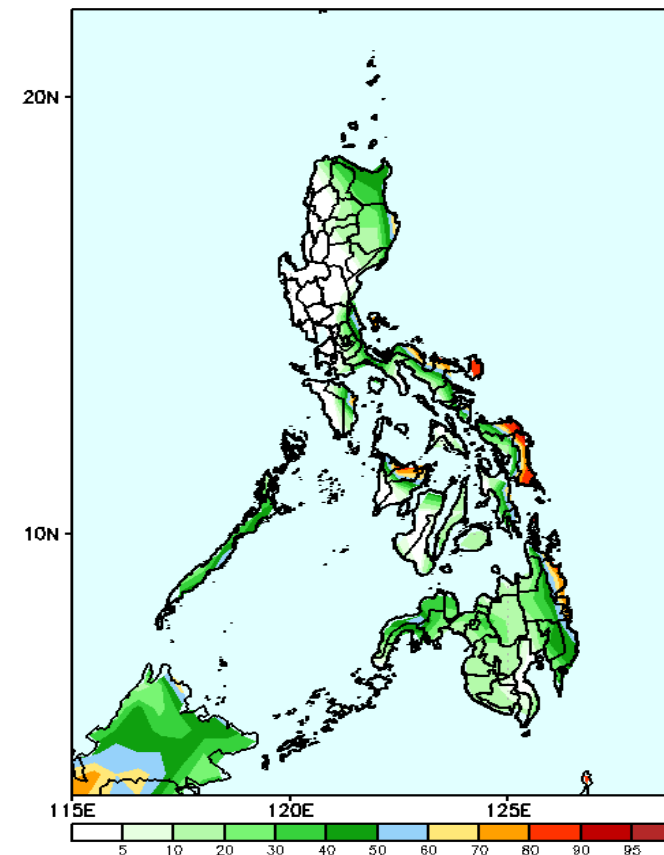
GEFS Week-2 Exceedance Prob. > 25mm
Valid: 20241120 - 20241126



Probability to Exceed 25mm

- High to very high over the eastern parts of the country, Zamboanga Peninsula, eastern Panay Island
- Moderate to high over Mindoro, Palawan, the rest of Apayao & Isabela, and the rest of Visayas and Mindanao
- Low over the rest of Luzon.

GEFS Week-2 Exceedance Prob. > 50mm
Valid: 20241120 - 20241126



Probability to Exceed 50mm

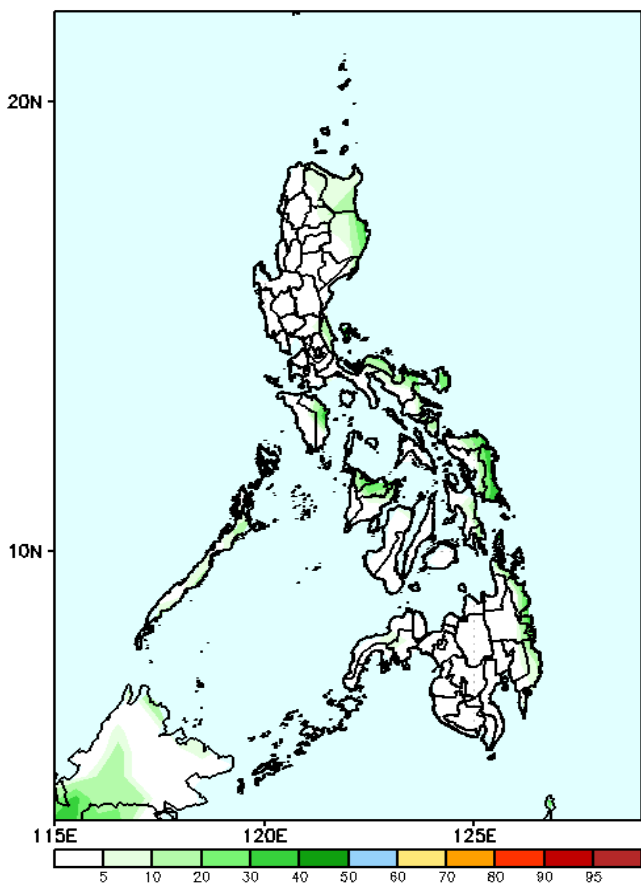
- Moderate to high over the eastern portions of Cagayan, Isabela, Quezon, Bicol Region, Eastern Visayas, Capiz, and the western and eastern portions of Mindanao;
- Low to moderate over the rest of the country.

Exceedance Probability > 100/150/200 mm

- Very high probability
- High Probability
- Moderate Probability
- Low Probability

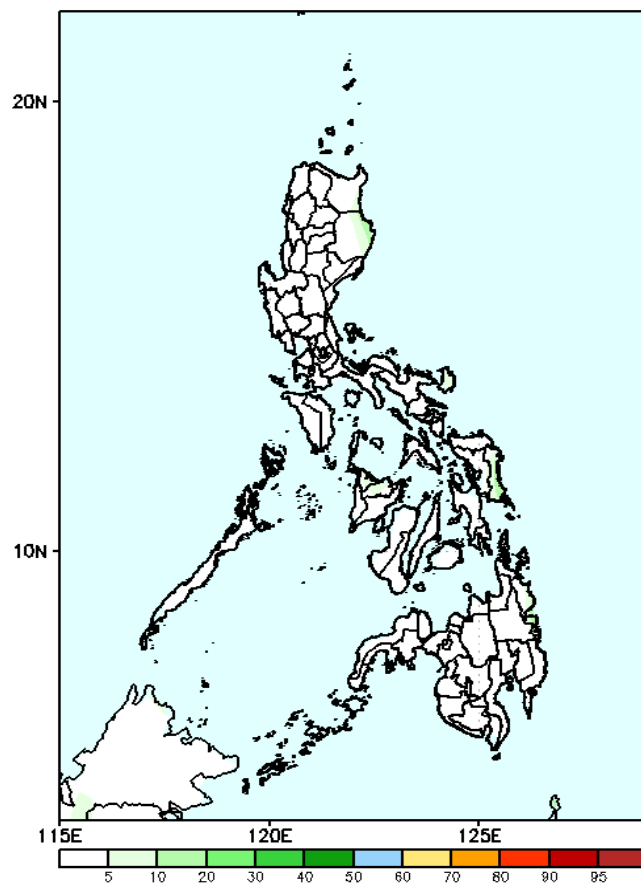
Week 2: Nov 20-26, 2024

GEFS Week-2 Exceedance Prob. > 100mm
Valid: 20241120 - 20241126



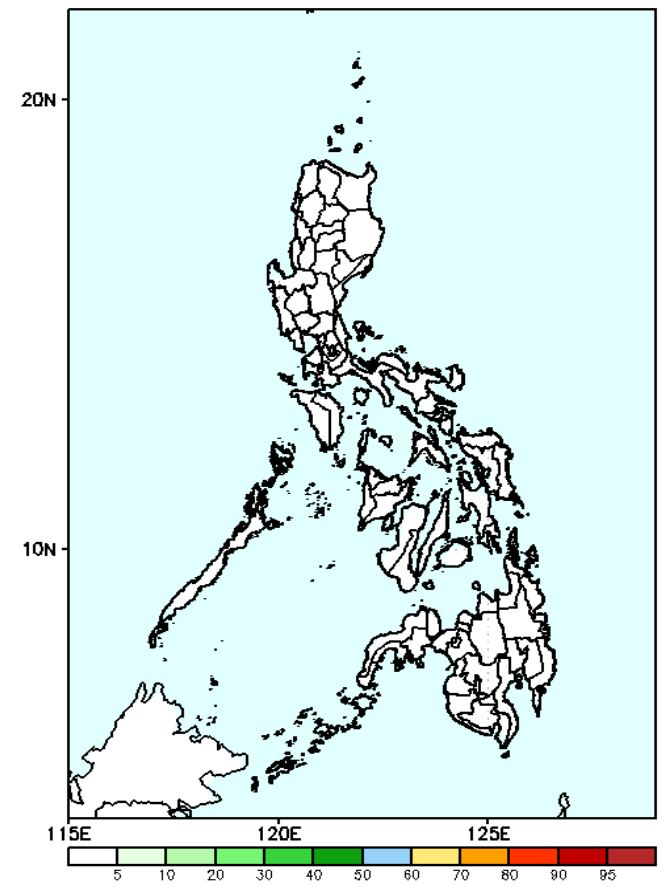
Probability to Exceed 100mm
• Low across the country.

GEFS Week-2 Exceedance Prob. > 150mm
Valid: 20241120 - 20241126



Probability to Exceed 150mm
• Low across the country.

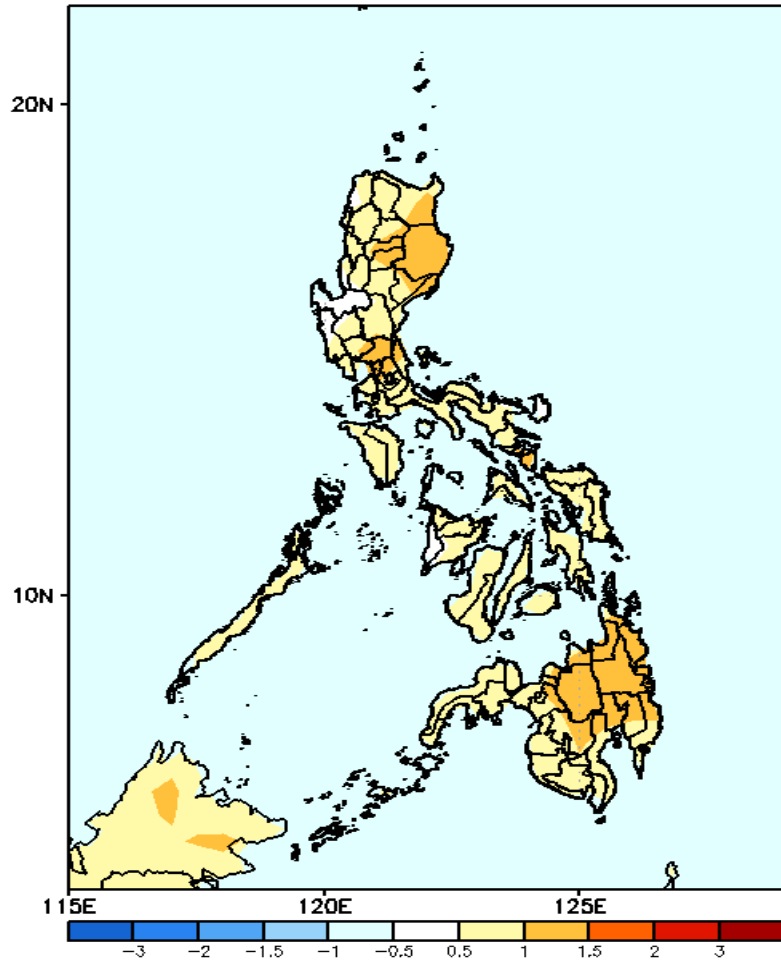
GEFS Week-2 Exceedance Prob. > 200mm
Valid: 20241120 - 20241126



Probability to Exceed 200mm
• Low across the country.

GEFS Week-1 & 2 Forecasts: T2m Anomaly

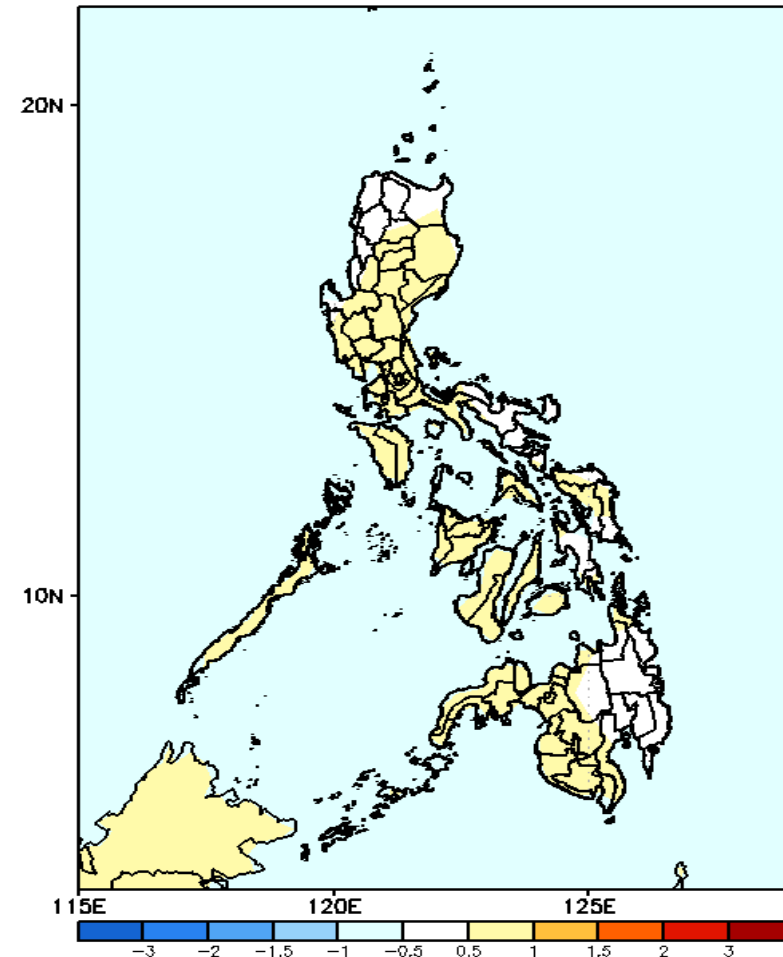
GEFS Week-1 T2m Anomaly
Valid: 20241113 - 20241119



2m Temperature Week 1: Nov 13-19, 2024

Slightly warmer to warmer than average surface air temperature will likely be experienced in most parts of the country.

GEFS Week-2 T2m Anomaly
Valid: 20241120 - 20241126



2m Temperature Week 2: Nov 20-26, 2024

Near to slightly warmer than average surface air temperature will likely be experienced in most parts of the country.